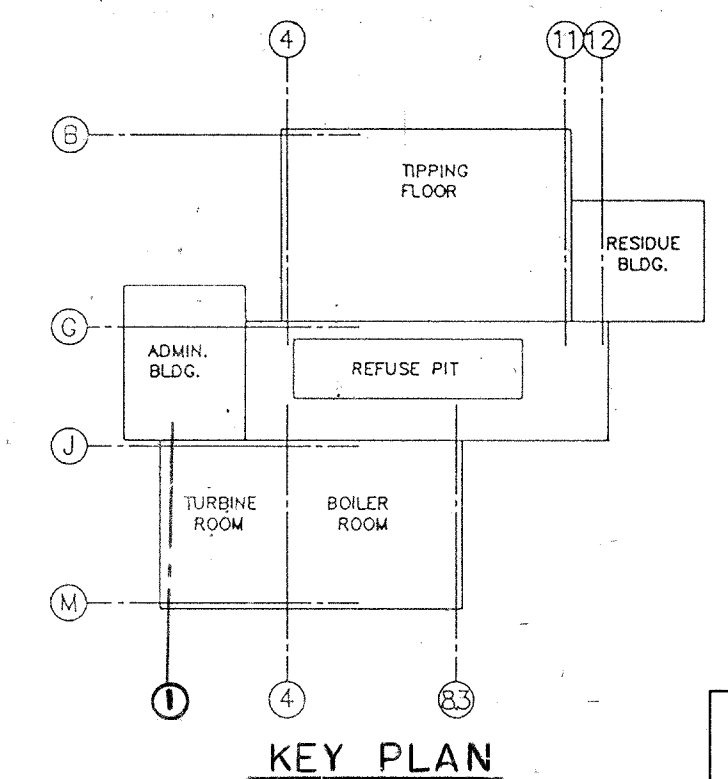


REVISIONS	
A	REPLACES S+L DWG 11101-4 ISSUED FOR CLIENT REVIEW & COMMENTS 10% COMPLETE 10-16-87
B	REDRAWN TO REFLECT FLAKT GEN. ARRGT. ISSUED FOR O.P.I. COMMENTS 90% COMPLETE 01-15-88
C	ISSUED FOR CLIENTS COMMENTS 99% COMPLETE 4/13/88
D	ISSUED FOR CONSTRUCTION" DWN: N.M.T. 7/29/88 CHKD: T.J. 8/11/88 APPD: DJA 8/12/88
E	ADDED EMISSION MONITORING UNIT DWN: N.M.T. 2/1/89 CHKD: T.J. 2/2/89 APPD: DJA 2/2/89



OGDEN MARTIN SYSTEMS OF KENT, INC.
GENERAL ARRANGEMENT
 AIR POLLUTION CONTROL AREA
 KENT COUNTY RESOURCE RECOVERY FACILITY

Engineering Design Services, Inc.

COMPANY CONFIDENTIAL
 THIS DRAWING AND ALL INFORMATION CONTAINED HEREIN ARE THE PROPERTY OF OGDEN MARTIN SYSTEMS OF KENT INC. AND ARE NOT TO BE USED EXCEPT AS EXPRESSLY AUTHORIZED IN WRITING BY SAID COMPANY.

DRAWN AFL	DATE 12-22-87	DESIGNED N.M.T.	DATE 8/11/88	PROJECT NO. 8712325	SCALE 1/8" = 1'-0"
CHECKED T.J.	DATE 8/11/88	APPROVED DJJ	DATE 8/12/88	DRAWING NO. 12325-M203	SHT. OF REV. 1

