

State of Technology for MSW Processing: *Smart Technologies for Processing MSW*

February 2020

By

Bradley Kelley, Senior Project Engineer
Gershman, Brickner & Bratton, Inc.



1

State of Technology

Gershman, Brickner & Bratton, Inc.

Innovative, Sustainable Solutions for Solid Waste Management

*We believe in a **world** where discarded materials are used as resources rather than wasted – for the benefit of communities and the environment. **both today and far into the future.***



2

U.S. Waste Management Infrastructure

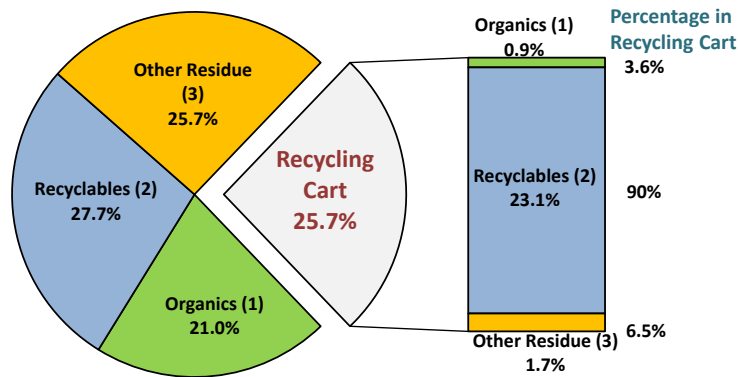
Technology	Number
Source Separation Collections	9,000
Material Recovery Facilities (MRF)	736
Composting	2,300
Mixed Waste Processing Facilities (MWPF)	51
Mass Burn WTE	65
Modular WTE	9
RDF -Processing &/ or Combustion	20
Anaerobic Digestion	19
Transfer Stations	3,350
Landfills	1,908

Sources: Most from Eileen Berenyi's Research ~ 2012-2015



3

MSW Processing Household Outputs

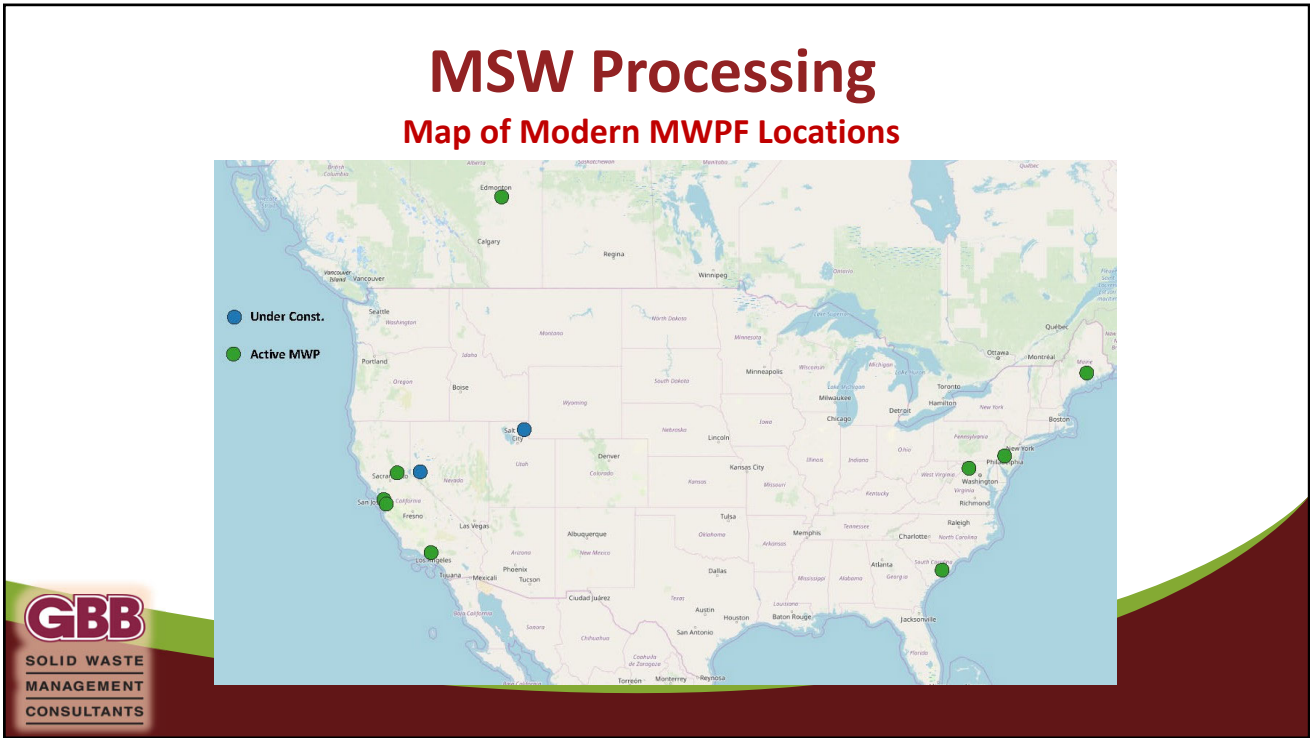


Source: GBB – Fayetteville, NC & Fort Worth, TX

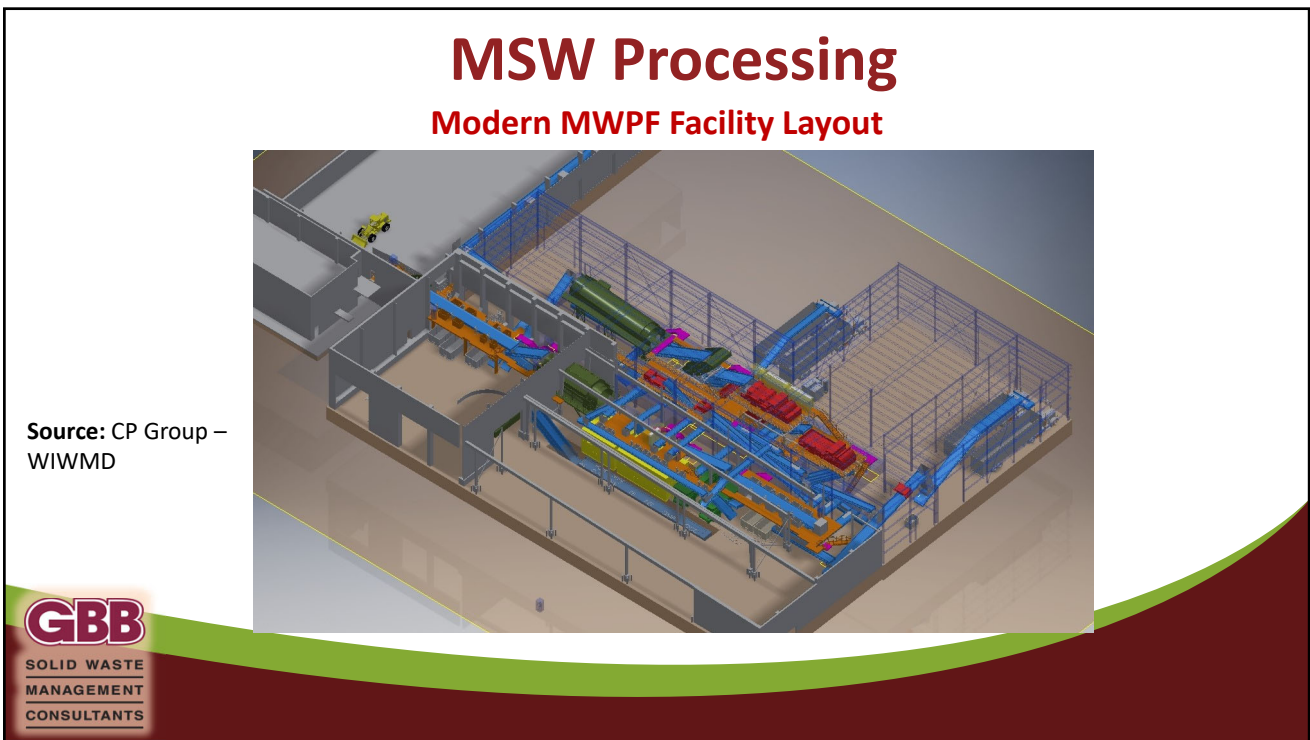
- (1) Contains Food Waste, Soiled Paper, and Yard Trimmings
- (2) Contains OCC, Other Fibers, PET, HDPE, Mixed Plastics, Al, Fe, Film and Glass
- (3) Includes C&D, Diapers, Textiles, Electronics and Other Residue



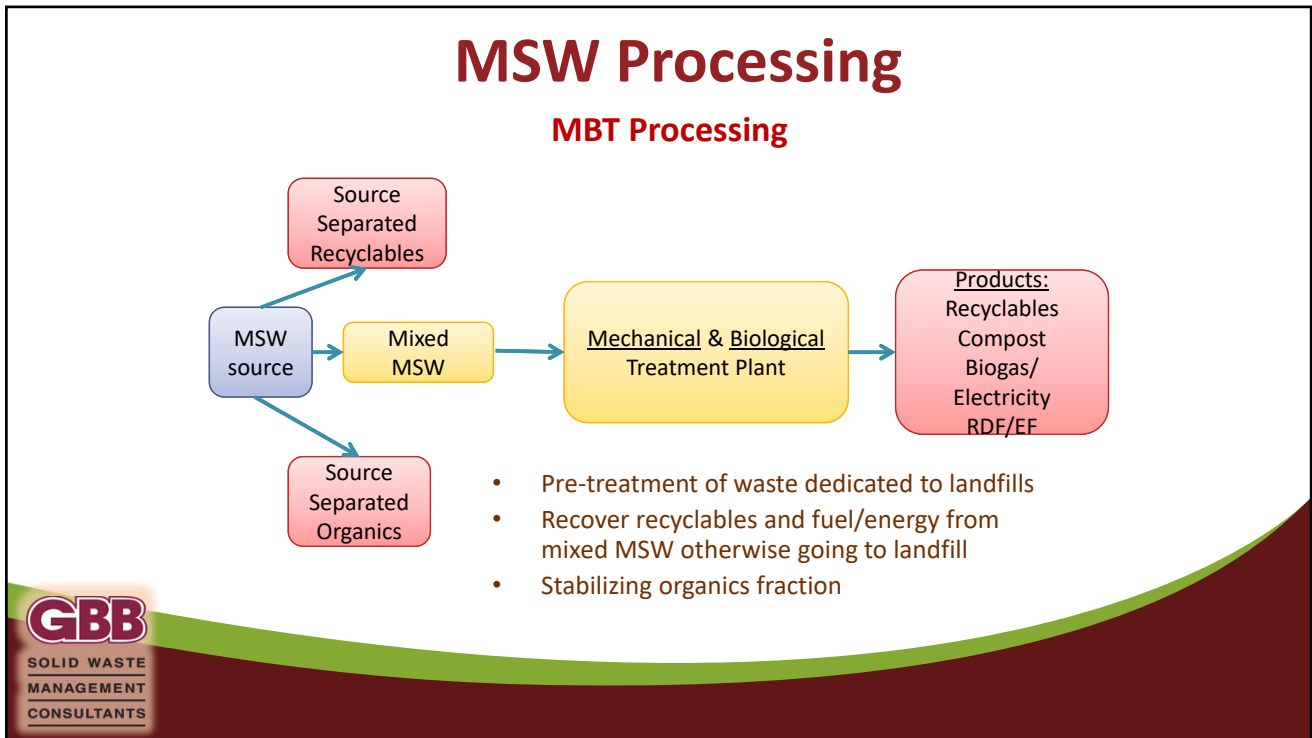
4



5



6



7



8

Processing Systems of the Future

- The Future of Material Recovery Facilities (MRF):
New Processing Systems will Consist of More of the Following:
 - **Combined Systems**
 - Systems will be capable of processing more than one type of stream, with some equipment processing multiple streams
 - **More Optical Units, less Screens**
 - Optical units will be utilized to recover more materials including fiber
 - Streams need only be divided by size/density prior to optical units (instead of by shape)
 - **Robotic Sorters**
 - Both for QC and for Pre-Sort – can positively pic multiple materials



9

Processing Systems of the Future

Combined Systems

Materials Recovery Facility Improvement Project

Source: MRWMD/BHS
– Monterey, CA



10

Optical Units

If you can see it, you can collect it....

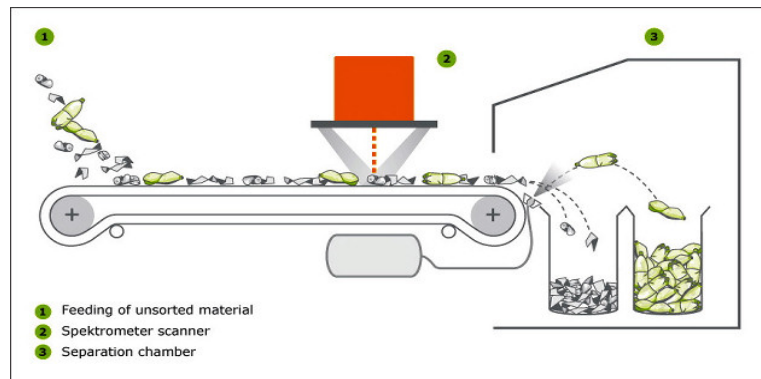


Source: CP Group / BHS



11

Optical Units



Source: TiTech/Tomra



12

Smart Technologies for MRFs

Improved Optical Units

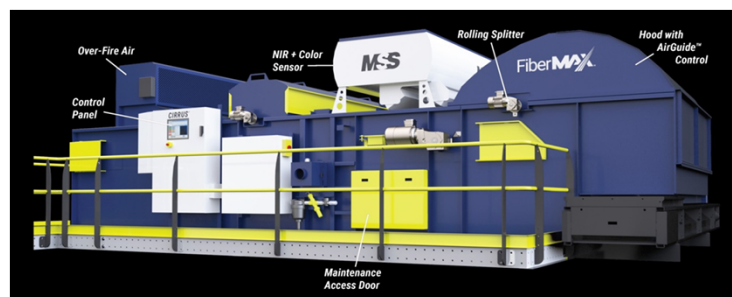
- With improvements in algorithms, shape recognition and attention to air flow characteristics, optical units can now better recover:
 - **Types of Fiber**
 - **Clean Wood**
 - **Film**
 - **Flexible Packaging**
 - **Cartons**
 - **Other potential target materials (i.e. Black Plastics)**



13

Smart Technologies for MRFs

CP Groups CIRRUS® FiberMax™



- Utilizes air flow to keep light-weight items from flying off the belt and improve trajectory
- Positive eject on plastics, other materials

Source: CP Group



14

Smart Technologies for MRFs

Video of CIRRUS® FiberMax™

[http://www.mssoptical.com/
cirrus-maxselect/fibermax//](http://www.mssoptical.com/cirrus-maxselect/fibermax//)

Source: CP Group



15

Smart Technologies for MRFs

Other Optical Advancements – Additional Spectrum and Lasers

Steinert Unisort Black



Source: Steinert

Tomra LOD



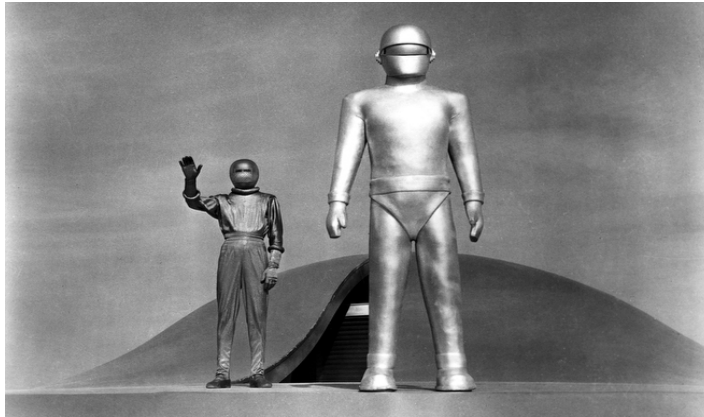
Source: Tomra



16

Processing Systems of the Future

The Rise of the Robots



Source: "The Day the Earth Stood Still" 1951



17

Smart Technologies for MRFs

Robot Sorters SamurAI™ and Max-AI®



Source: Machinex / BHS



18

Smart Technologies for MRFs

Robotic Sorters



AMP Cortex



RoBB-AQC

Source: AMP / Van Dyk



Smart Technologies for MRFs

Video of QC Robotic Sorter – Max AI®

<http://www.max-ai.com/>

Source: BHS



Smart Technologies for MRFs

QC Robotic Sorters – Advantages and Disadvantages

- **Advantages**
 - Better Speed and Accuracy (*for most items*) than Manual QC (*Most will achieve 98% purity (or more) after an optical unit for PET or HDPE*)
 - No Pee Breaks!
 - Decent ROI
- **Disadvantages**
 - Expensive (*not right for all situations*)
 - New, difficult to know lifespan and maintenance needs
 - Still susceptible to items that aren't "seen"
 - Limited belt sizes and throughput (*for now*)
 - Don't believe all the hype....

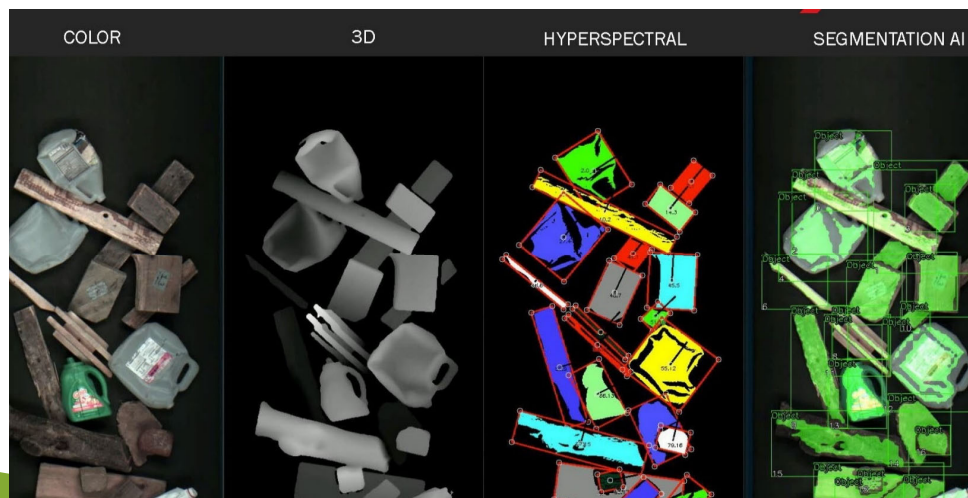


21

Smart Technologies for MRFs

Robotic Sensors with AI

Source:
Waste
Robotics



22

Processing Conclusions

The lines between processing Single Stream, MSW and C&D will become blurred

- Systems will be capable of processing multiple material streams
- Optical and robotics will be able to easily target multiple materials not traditionally recovered
- AI and sensors will increase the knowledge regarding what is in both inputs and outputs from processing systems
- The very nature of the processing systems will create new commodity streams that without a market will become residue
- The processing facilities will need to be part of a larger recovery system to be successful (SBP or MMC's)



23

Additional Info

Technology and Equipment Guide

Supplemental Report: *The Evolution of Mixed Waste Processing Facilities – Technology and Equipment Guide (2015)*

- Prepared for the American Chemistry Council
- <https://plastics.americanchemistry.com/Education-Resources/Publications/The-Evolution-of-Mixed-Waste-Processing-Facilities-Technology-and-Equipment-Guide.pdf>



24

Thank you!

Questions and Comments?

Bradley Kelley, BSME

bkelly@gbbinc.com

www.gbbinc.com

1-800-573-5801

